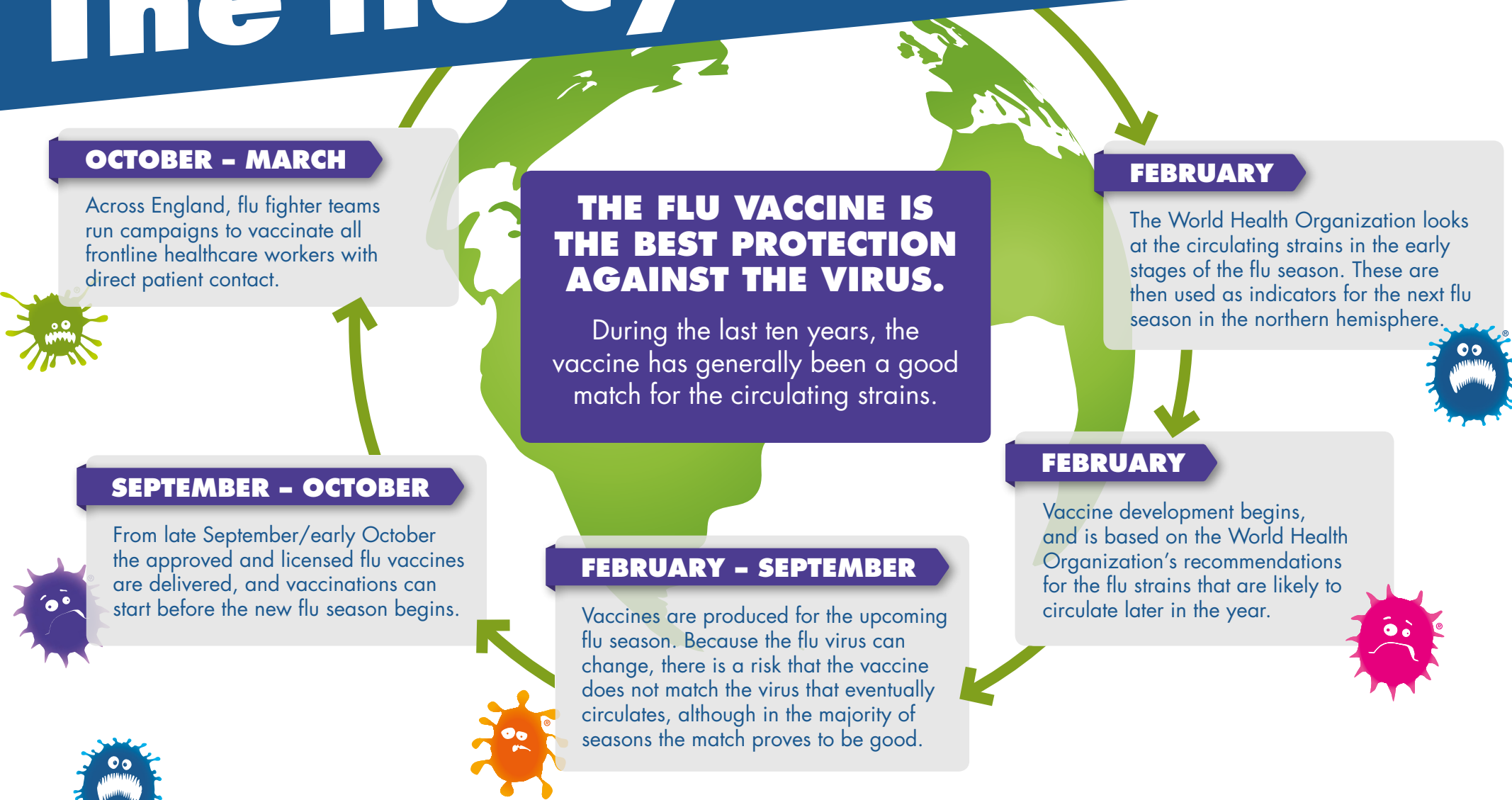


The flu cycle



OCTOBER - MARCH

Across England, flu fighter teams run campaigns to vaccinate all frontline healthcare workers with direct patient contact.

THE FLU VACCINE IS THE BEST PROTECTION AGAINST THE VIRUS.

During the last ten years, the vaccine has generally been a good match for the circulating strains.

FEBRUARY

The World Health Organization looks at the circulating strains in the early stages of the flu season. These are then used as indicators for the next flu season in the northern hemisphere.

SEPTEMBER - OCTOBER

From late September/early October the approved and licensed flu vaccines are delivered, and vaccinations can start before the new flu season begins.

FEBRUARY - SEPTEMBER

Vaccines are produced for the upcoming flu season. Because the flu virus can change, there is a risk that the vaccine does not match the virus that eventually circulates, although in the majority of seasons the match proves to be good.

FEBRUARY

Vaccine development begins, and is based on the World Health Organization's recommendations for the flu strains that are likely to circulate later in the year.